

BERA GRAVEL FIX[®] *pro*

Gravel Stabilization System



BERA[®]

PRESERVE WATER FOR FUTURE GENERATIONS

Water Facts:

Ground water is rainwater that has seeped into the substrate. It is important for the production of drinking water and prevents agricultural and wildlife areas from drying out. The water crisis is the #1 global risk based on impact to society (as a measure of devastation), and the #8 global risk based on likelihood (likelihood of occurring within 10 years) as announced by the World Economic Forum, January 2015.

i source: water.org.

BERA® The GREEN Solutions Provider

Since the start of production in 2010, BERA has been committed to integrating the United Nations' sustainability directives into its operations. In 2014, independent audits validated this dedication, awarding BERA the prestigious Cradle-to-Cradle certification. In 2024, auditors from Swedish EPD further recognized BERA's efforts by certifying multiple products for stabilization and water management, including BERA Gravel Fix®, BERA® Grass Fix Eco+, and BERA WaterFix®. With pride, we offer online access to these certificates for review and implementation.



The areal view of our manufacturing facilities.

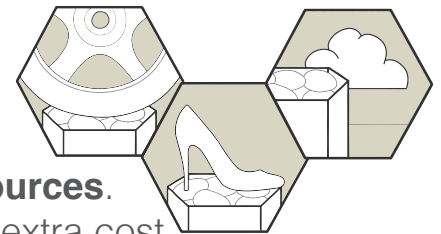
OUR SUSTAINABILITY COMMITMENTS

Environmental and Engineering Excellence

BERA Gravel Fix® Pro is EU-manufactured under strict environmental standards, including REACH (EC 1907/2006) compliance. Made with recycled materials and optimized logistics, it minimizes environmental impact. Its Life Cycle Analysis is part of the EPD certification, available at www.environdec.com or via info@bera-bv.com.

BERA Gravel Fix®, Truly Sustainable & Durable

BERA Gravel Fix® Pro is a **high-performance, eco-friendly stabilization system** for **vehicular and pedestrian use**. Designed for **stability, durability, and sustainability**, it ensures a **long-lasting, permeable surface** while minimizing environmental impact.



✓ Sustainably Designed & Manufactured

- Produced in **Europe using renewable energy sources**.
- Made from **100% recycled raw materials**—at no extra cost.
- **Fully recyclable** at the end of its lifecycle.
- **No microplastics**—crafted from **high-quality polypropylene**, including DuPont™ Tytar® geotextile with a **100-year expected lifespan**.
- Free from glue—assembled with **thermally welded connections**.

✓ Exceptional Performance

- **Rapid rainwater infiltration** of up to **180 liters/sec per m²**, preventing water accumulation.
- Promotes **immediate infiltration into subbase layers**, eliminating stagnant water.
- **UV and frost-resistant**, ensuring longevity in various climates.
- Proven for **vehicle use in 47 countries worldwide**, including heavy trucks.
- **Safe and compliant** with **REACH (EC 1907/2006) standards**.

✓ Versatile & User-Friendly

- Ideal for **parking areas, driveways, pathways, and terraces**.
- **No sinking**—stable support for terrace furniture, ladders, high heels, bicycles, motorbikes, and wheelchairs.
- Manufactured with a **social awareness policy**, supporting responsible and ethical production.

BERA Gravel Fix® Pro is more than just a gravel stabilization solution—it's a commitment to **sustainable innovation, durability, and environmental responsibility**.



THE INTERNATIONAL EPD® SYSTEM



What is EPD?

An Environmental Product Declaration (EPD) transparently reports objective, comparable and third-party verified data about products and services' environmental performances from a lifecycle perspective. Where the EPD is the final report, the foundation of any EPD is a life cycle assessment (LCA). This LCA allows you to evaluate your product's environmental performance over its entire life cycle. It typically takes into consideration your full value chain, from material extraction to manufactured product, its usage stage and end of life.

Why EPD?

Installing a BERA product with an EPD certificate helps architects and engineers meet Green Building Scheme requirements while providing owners with assurance of its environmental performance and footprint.

BERA is committed to minimizing environmental impact, eliminating microplastics, and supporting natural water retention by ensuring rainwater remains where it falls on our planet.

INTRODUCTION

What is BERA Gravel Fix® Pro?

BERA Gravel Fix® Pro is an **advanced, recyclable stabilization system** designed for **gravel, shells, mulch, and sand**. Featuring a **high-quality polypropylene honeycomb structure**, it provides a **strong, stable sub-base** for professional gravel applications in paths, driveways, car parks, and roofs. Installed by professional contractors, it ensures a **durable, porous surface** for both residential and urban projects.

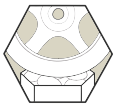
Applications:

- 👉 Landscaping & urban areas
- 👉 Residential gardens & terraces
- 👉 Parking spaces & gravel driveways
- 👉 Service access routes



Why Choose BERA Gravel Fix® Pro:

- 👉 **Quick & easy installation** – Ensures a stable gravel surface in a fast and cost-effective way.
- 👉 **Available in three sizes** – Pro, Pro XL (book-fold), and Pro XXL (0.9 – 2.7 m²).
- 👉 **Supports pedestrian & vehicle use** – Suitable even for trucks.
- 👉 **Effortless mobility** – Ideal for high heels, bicycles, motorbikes, and wheelchairs.
- 👉 **Stable support** – Prevents sinking of terrace furniture, ladders, and other structures.
- 👉 **Fully porous design** – Keeps surfaces dry and allows immediate rainwater infiltration.
- 👉 **Enhanced with DuPont™ Typar® geotextile** – Maximizes porosity and reduces weed growth.



🌿 For your vehicle use and parkings



🌿 For maximum mobility and stability on path and walkways



🌿 For green roofing with sedum or stable base for (roof) terraces



🌿 All BERA Gravel Fix products are manufactured with **GREEN** solar and biomass power.



🌿 UV stabilisation included

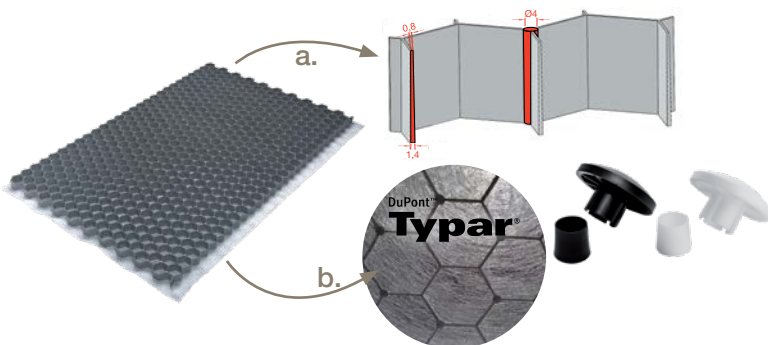


🌿 Made in Europe



Did You Know?

- a. BERA Gravel Fix® Pro has 32 mm deep, tapered cell walls of 1.4 mm at the base and 0.8 mm at the top to ensure the highest vertical strength. The ultrasonic welding process adds to the lateral strength for use on sloped areas.
- b. Geotextile with DuPont™ Typar® for maximum drainability following EN ISO 11058
- c. Parking Markers available for organizing your parking lots
- d. BERA Gravel Fix® Pro is globally installed in 47+ countries and 5 continents



TECHNICAL

TECHNICAL SPECIFICATIONS*

GENERAL

Material	: 100% recycled or pure polypropylene, 100% recyclable
Manufacturing technique	: High Precision Green Injection Moulding
Manufacturing standards	: ISO9001, 16949 Lloyds, REACH, EPD
Manufacturing location	: European Union
Colour	: White, grey, black or RAL
Cell structure	: Hexagonal
Membrane	: DuPont™ Typar® – 68 g/m ²
Drainability EN ISO 11058	: 180 liter / (m ² .s)
UV and frost	: UV and frost resistant

PHYSICAL DATA

Model	Pro	Pro XL	Pro XXL
Dimensions L x W x H (mm)	: 1176 x 764 x 32	1176 x 764 x 64 (folded) 1528 x 1176 x 32 (installed)	2292 x 1176 x 32
Installed surface (m ²)	: 0.9	1.8	2.7
Cell size (mm)	: 42	42	42
Wall thickness, tapered (mm)	: 0.8 - 1.4 mm	0.8 - 1.4 mm	0.8 - 1.4 mm
Weight (kg)	: 1.4	2.8	4.2
Gravel/split volume/weight	: 50 l/m ² = 75 kg/m ² - size between 3 and 16 mm**	50 l/m ² = 75 kg/m ² - size between 3 and 16 mm**	50 l/m ² = 75 kg/m ² - size between 3 and 16 mm**
Vertical strength, empty (T/m ²)	: 120 resp. 95 (white resp. grey/black)	120 resp. 95 (white resp. grey/black)	120 resp. 95 (white resp. grey/black)
Vertical strength, installed (T/m ²)	: > 450 depending on gravel/split	> 450 depending on gravel/split	> 450 depending on gravel/split

* All data is subject to change without prior notice by the manufacturer

** Use smaller size of gravels such as 3-6mm for strollers, high heels, and wheelchairs, well compacted. If in doubt contact us via info@bera-bv.com

Notes:

- BERA Gravel Fix® Pro is frequently used on light slopes including driveways. Specific requirements on the application depend on the circumstances on site. Please contact the manufacturer or the dealer for further advice.
- BERA Gravel Fix® Pro is EPD certified available in multiple sizes.

GEOTEXTILE DuPont™Typar® TECHNICAL DATA

Essential characteristics	Test Method	Unit	Performance
Tensile Strength T ^{max}	EN ISO 10319	kN/m	MD 3.7 (- 0.8) CMD 3.4 (- 0.8)
Dynamic Perforation Resistance D	EN ISO 13433	kN/m	50 (+ 0)
Resistance to Static Puncture F	EN ISO 12236	mm	0.500 (-0.08)
Opening Size O ⁹⁰	EN ISO 12956	kN	225 (+/- 40)
Water Permeability V ^{H50}	EN ISO 11058	m/s	180 x 10 ⁻³ (- 40 + 10 ⁻³)
Durability in accordance with Annex B	Predicted to be durable for more than 100 years in all natural soils with temperatures <25 °C on the basis of a durability assessment (Typargeo Report 070)		

Source: DuPont™Typar® SF20 Declaration of Performance

INSTALLATION

For path



1.5 cm gravel
3.2 cm BERA GRAVEL FIX® with gravel
10 cm sharp sand or gravel

Vehicle use



1.5 cm gravel
3.2 cm BERA GRAVEL FIX® with gravel
4 - 6 cm sharp sand or gravel
15 - 25 cm crushed stone

FOUNDATION

Foundation profile to be determined by site conditions and suitable for anticipated load. In general the foundation shall be:

For paths only: a leveled layer of 10 cm sharp sand or angular gravel.

For vehicle use: a compacted layer of 15-25 cm MOT (crushed stone) plus 4-6 cm leveled sharp sand or angular gravel.



SHAPING

Create shape using border systems in aluminium, Corten or galvanized steel, wood or plastic. Height (5-15 cm) and thickness depending on expected load. Use laser height determination for alignment with surrounding area.



COMPACTING

A stable, well compacted base, as used in all other paving methods, is essential. Failure may lead to non-performance of BERA Gravel Fix® Pro as intended.



LEVELING

After compacting, level the sand or gravel layer eliminating any surplus sand/gravel. Remove any debris or sharp items from the sand/gravel layer.



LAYING

Each sheet has extended geo-textile lips on 2 sides. Lay the sheets onto the extended geo-textile lip of the adjacent sheet for maximum stability, weed control and support. Check with your supplier for specific instructions.



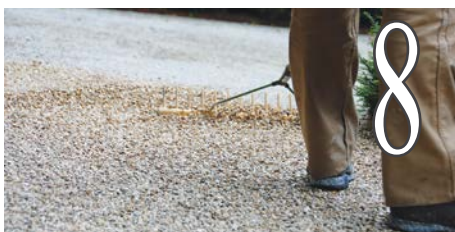
TRIMMING

Cut to fit to edging or obstacles using hand or electric tools to ensure sheets are firmly fixed within the edges. Important: Please follow tool manufacturers safety instructions.



FILLING

Fill the sheets with gravel size min. 3 max. 16 mm, which should exceed the height of the cell wall by 15-20 mm. (refer to our Technical Documentation for further details).



FINISHING

Rake the gravel to distribute evenly. Maintenance is limited to raking and removing leaves and other debris. Important: Keep the sheets covered with gravel for maximum durability. Top-up gravel as and when required to keep the sheets covered.



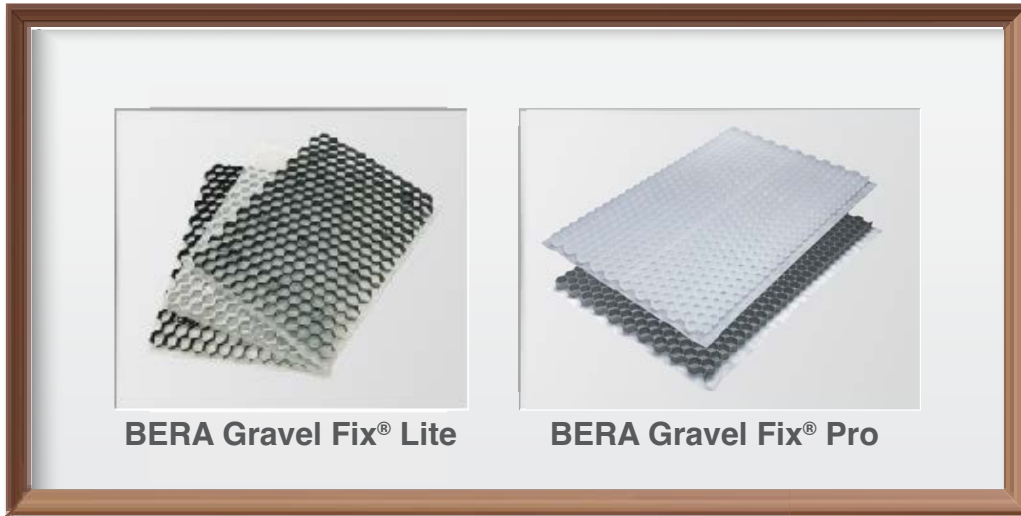


OUR EPD CERTIFIED PRODUCTS



THE INTERNATIONAL EPD® SYSTEM

Gravel Stabilization System



BERA Gravel Fix® Lite

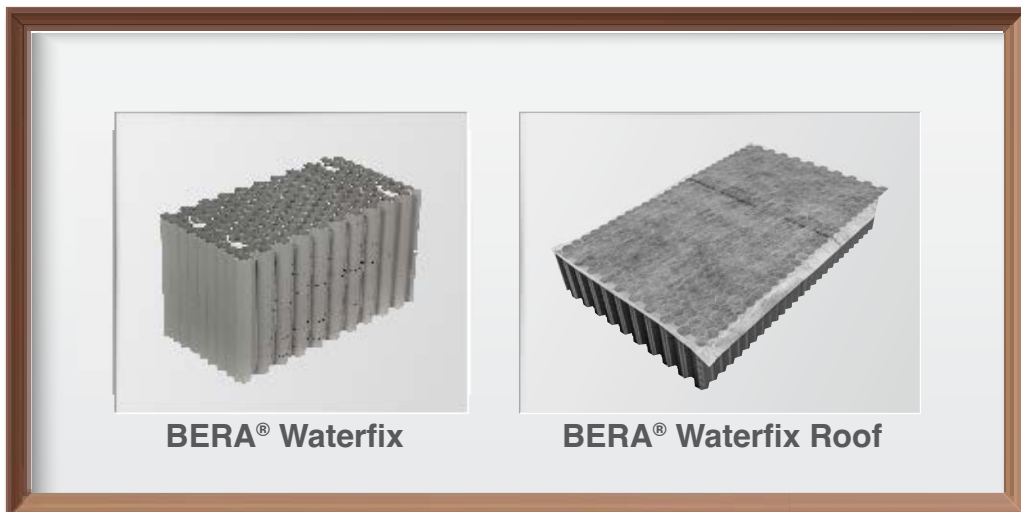
BERA Gravel Fix® Pro

Grass Stabilization System



BERA® Grass Fix Eco+

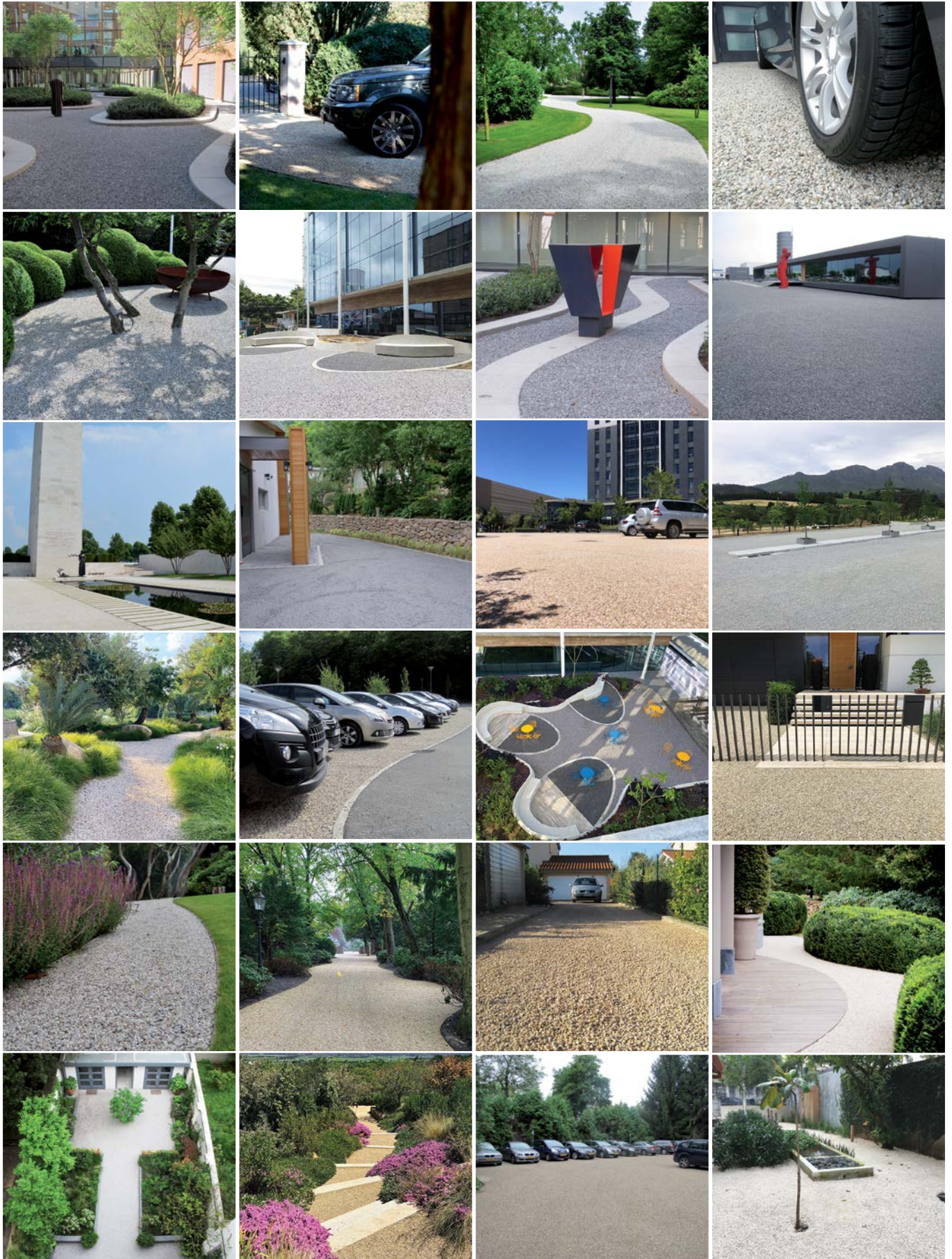
Rainwater Management System



BERA® Waterfix

BERA® Waterfix Roof

APPLICATION REFERENCES





BERA® is the trademark of BERA B.V. of The Netherlands, a company which develops stabilization systems, eco systems and prestigious outdoor living concepts.

With the company's historical roots & wealth of know-how in landscaping and architectural fields, they create innovative and environmentally sustainable solutions, supplied throughout Europe, the Middle-East, Africa, Central America and S-E Asia regions.

Contact Us

HEADQUARTER

BERA B.V. (THE NETHERLANDS)

T: +31 (0) 33 257 0302

E: info@bera-bv.com

SALES OFFICES

Belgium

T: +32 474 980 273

E: raphael@bera-bv.com

Czech Republic

T: +420 777 484 937

E: beracz@bera-bv.com

France

T: +33 (0) 9 81 12 76 58

E: info@bera-sarl.fr

Germany

T: +49 (0) 30 78 71 68 85

E: kontakt@bera-bv.com

Slovakia

T: +421 910 705 706

E: slovakia@bera-bv.com

South Africa

T: +27 83 449 3954

E: franko@bera-bv.com

Centro América

T: +(506) 87039731

E: centro.america@bera-bv.com



www.bera-bv.com