

BERA  GRASS FIX
 **eco**⁺

Grass Stabilization System



BERA[®]

What is BERA® Grass Fix Eco+?

BERA® Grass Fix Eco+ is a versatile yet strong method to reinforce your green areas. It is an unique 'circular' product to be implemented in the stabilization of grassed area's such as overflow parkings and emergency roads.

Most grass pavers made of concrete, tend to heat up causing the grass to dry out and scorch, creating discomfort for bare foot pedestrians. Due to the low thermal conductive properties of HDPE, BERA® Grass Fix Eco+ solves this problem. Furthermore an integrated absorption system for limited thermal expansion is provided for as a part of the secure interlocking.

Applications:

- Landscaping greened urban areas
- Residential gardens
- Parking and grass driveways
- Paths and service access routes
- Paddocks and other equestrian area's

Features and benefits of BERA® Grass Fix Eco+:

- Environmentally friendly solution, fully circular process including 'in-house' household waste collection, separation, cleaning and processing into a fully recyclable strong stabilization product
- Strength empty up to 170 T/m² for truck access
- Versatile honeycomb modules with anti-slip nods, 55 x 38 cm, depth 3.1 cm
- Secure interlocks keeping sheets perfectly together, providing a stable base for all trafficked area's
- Anchors at the bottom of each sheet preventing shifting of the sheets
- Fully porous, yet retaining humidity for the growth of the grass
- Easily cut around obstacles such as trees, shrubs or fences
- Fully porous, yet retaining humidity for the growth of the grass
- European Union manufacturing following directives of REACH, ISO9001 and 14001



① for grassed parkings & driveways



① UV stable

Environmental and Engineering Excellence

BERA® Grass Fix Eco+ is manufactured in the Czech Republic under stringent Quality and Environmental Control. The full circular process includes 'in-house' household waste collection, separation, cleaning and processing into a fully recyclable strong stabilization product. The well developed infrastructure to minimize our delivery carbon footprint underlines our corporate vision in providing environmentally sustainable solutions. BERA® Grass Fix Eco+ has 31 mm deep, open cell to ensure the highest vertical strength whilst allowing the grass to grow. Integrated anchors and secure interlocking systems provides stability and lateral strength for slopes and heavy duty use with grass. Professional construction preparation methods and well drained foundations will ensure continued high performance of BERA® Grass Fix Eco+ for many years.

TECHNICAL SPECIFICATION*

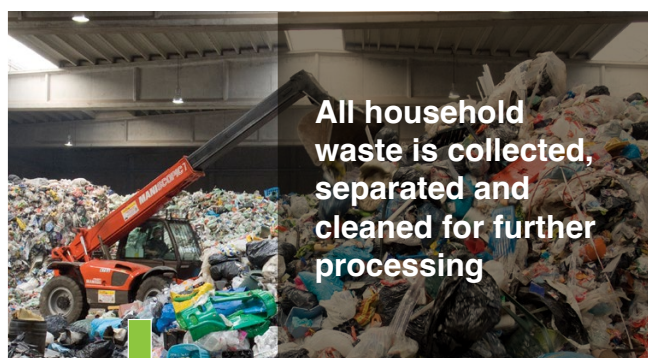
GENERAL

Material	: Recycled High Density PolyEthylene (HDPE)
Manufacturing technique	: High precision injection moulding
Manufacturing standards	: REACH, ISO9001, ISO14001
Application standards	: DIN 14090
UV and frost resistance	: Included
Colour	: Green or grey
Cell structure	: Honeycomb
Anchors	: Integrated
Interlocking	: Secured interlocking

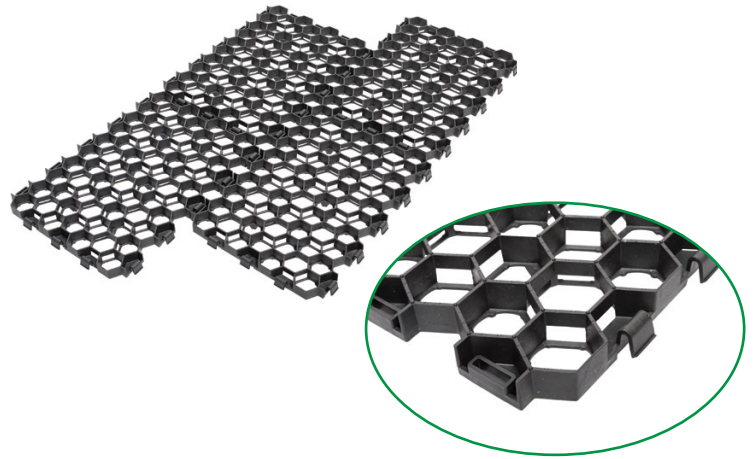
PHYSICAL DATA

Standard sheet size	: 55 x 38 x 3.1 cm
Standard size incl. anchor height	: 55 x 38 x 5.1 cm
Tolerance dimensions	: +/- 2%
Surface per sheet	: 0.21 m ²
Quantity per m ²	: 4.76
Quantity of sheets / m ² per pallet	: 140 sheets / 29.4 m ²
Weight per sheet, approx.	: 0.9 kg
Weight per m ² , approx.	: 4.3 kg
Strength, empty EN 124-1:2017	: 170 T/m ²
Thermal expansion at 50°C	: 1 %

**All data are subject to change without further notice*



LAYING INSTRUCTIONS



1. Foundation

The foundation method will depend on the local conditions of the soil and the expected load during usage. The foundation needs to be determined by specialists in order to reach the desired results. Below are the typical guidelines:

A foundation of 20 – 40 cm compacted crushed stones and gravel (depending on the load) will form a permeable subbase. For vehicle use it is recommended that a non-woven geo-textile of 300 – 500 g/m² is laid over the compacted crushed stones and gravel in order to separate it from base layer (see below). Instability of the surface may result if this is not done.

2. Base preparation for BERA® Grass Fix Eco+

A levelled base of mixed sand and crushed stone with a thickness of 5-7 cm should be placed on top of the geo-textile sheet. Levelling recommended to be done at temperatures not below 3°C. Edging is required to prevent sheets from shifting during usage. BERA® Edging Systems are available upon request and come complete with stakes for quick installation. To allow the sheets to expand during high ambient temperatures, it is recommended that an expansion space of 2-5 cm be left between edges and obstacles, depending on the total surface size.

3. BERA® Grass Fix Eco+ sheets

After completing the foundation, base and edging, the sheets can be laid quickly. Stretcher bond pattern for additional stability. Pallets with 140 sheets (29.4 m²) can be positioned close to the working area and no tools are required for the laying. Anchors are integrated at the bottom of the sheets for additional stability. For slopes or banks additional anchoring may be required. Use light compacting machines if and when required. For adjustment of the sheets at corners or obstacles a handsaw or circular saw can be used.

4. Grass

Drought resistant grasses, appropriate to the area and climatic conditions should be used. After filling the honeycomb sheets with a mixture of sand, peat and soil (approx 40/30/30%) watering of the BERA® Grass Fix Eco+ sheets is recommended prior to sowing. Use a suitable fertilizer and water frequent to ensure fast and consistent grass growth. After some time the soil mixture used to fill the sheets will compact by about 1 cm leaving sufficient space for the grass to grow undamaged. Normal lawn maintenance including watering, fertilizing and cutting should be done at regular intervals.





BERA® is the trademark of BERA B.V. of The Netherlands, a company which develops stabilization systems, eco systems and prestigious outdoor living concepts.

With the company's historical roots & wealth of know-how in landscaping and architectural fields, they create innovative and environmentally sustainable solutions, supplied throughout Europe, the Middle-East, South Africa and S-E Asia regions.

Contact:

BERA B.V. (The Netherlands)
T: +31 (0) 33 257 0302
E: info@bera-bv.com

BERA (Africa) Pty Ltd
T: +27 83 449 3954
E: franko@bera-bv.com

BERA Slovakia s.r.o. (Slovakia)
T: +421 910 705 706
E: slovakia@bera-bv.com

BERA Latinoamérica
T: +(506) 87039731
E: centro.america@bera-bv.com

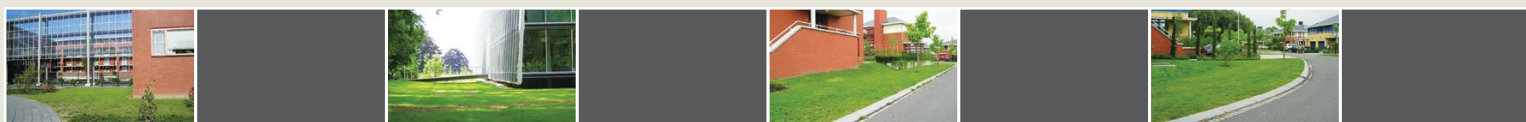
BERA Sarl (France)
T: +33 (0) 9 81 12 76 58
E: info@bera-sarl.fr

BERA Egypt
T: +02012 042 411 16
E: sally@bera-bv.com

BERA B.V. (Germany)
T: +49 (0) 30 78 71 68 85
E: kontakt@bera-bv.com

BERA CZECH s.r.o. (Czech Republic)
T: +420 777 484 937
E: beracz@bera-bv.com

BERA B.V. (Russia)
T: +7 910 440 64 70
E: russia@bera-bv.com



www.bera-bv.com