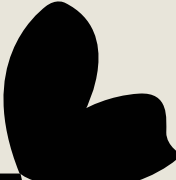




BERA  Terrace Floor

Elevated Outdoor Terrace System

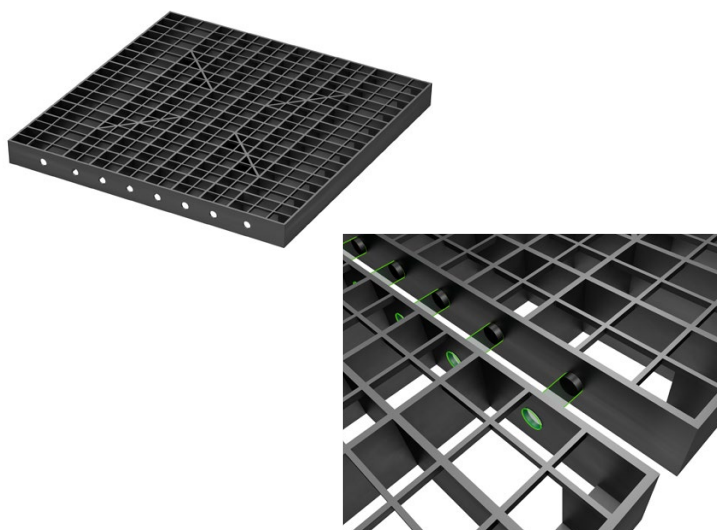


BERA®

What is BERA Terrace Floor™?

Our Innovative and Recyclable Terrace Floor System has been designed to become the 'double' elevated floor, to allow for laying any size, shape or pattern of (ceramic) tiles or pavers.

Made of 100% recycled polycarbonate originating from the automotive industry, 100% recyclable and above all manufactured in our 'green' sustainable Czech plant we provide another unique solution in landscaping, this time for the growing demand for creative terrace designs with stunning ceramic tiles.



Environmental and Engineering Excellence

BERA Terrace Floor™ is manufactured in the Czech Republic under stringent Quality and Environmental Control. The full circular process includes recycled raw material collection, cleaning and processing into a fully recyclable strong product. The well developed infrastructure to minimize our delivery carbon footprint underlines our corporate vision in providing environmentally sustainable solutions.

BERA Terrace Floor™ has 50 mm deep, open grid structure to ensure the highest vertical strength and rigidity. Integrated lateral interlocking systems and fixations pads made of polyamide provide enhanced stability and lateral strength. All material is 100% recyclable after end of life.

Applications:

- 👉 Terraces (garden, roof and restaurant)
- 👉 Balconies and access gallery
- 👉 Pool deck
- 👉 Pedestrian area's in general

Features and benefits of BERA Terrace Floor™:

- 👉 Free surface for ceramic and concrete tiles or other paving products even artificial grass
- 👉 Extremely rigid floor for safety and strength rated at 750 kg point load
- 👉 Large 60 x 60 cm grids for fast installation directly on pedestals, timber or aluminium joints
- 👉 Lateral connectors for additional strength
- 👉 Fixation pads made of polyamide for pressure distribution
- 👉 Durability of the entire system, no rotting
- 👉 Rainwater can discharge through the available existing drainage system
- 👉 All technical wiring, tubing etc. can be hidden under the floor
- 👉 European Union manufacturing following directives of REACH, ISO9001 and 14001

TECHNICAL SPECIFICATION*

GENERAL

| | |
|-------------------------|-------------------------------------|
| Material grids | : Recycled Polycarbonate |
| Manufacturing technique | : High precision injection moulding |
| Manufacturing standards | : REACH, ISO9001, ISO14001 |
| UV and frost resistance | : Included |
| Colour | : Black |
| Interlocking | : Included |

PHYSICAL DATA

| | |
|-----------------------------------------------|----------------------------------|
| Grid size | : 60 x 60 x 5 cm |
| Tolerance dimensions | : +/- 2% |
| Surface per grid | : 0.36 m ² |
| Quantity per m ² | : 2.78 |
| Weight per grid, approx. | : 2.8 kg |
| Weight per m ² , approx. | : 7.8 kg |
| Strength, point load | : Up to 750 kg |
| Quantity of grids / m ² per pallet | : 88 grids / 31.7 m ² |
| Weight per pallet | : 270 kg |
| Dimensions pallet | : 120 x 120 x 125 cm |
| Quantity per trailer (44 pallets) | : 3872 pcs / 1394 m ² |

**All data are subject to change without prior notice*



System components BERA Terrace Floor™

| Product ID | Description | Note |
|------------|--------------------------------------------------------------------|--------------------------|
| 3501000 | Grid 60 x 60 x 5 cm | Packing 88 pieces/pallet |
| 3501001 | Fixation Screw-Pad | Box, 100 pieces |
| 3501002 | Spacer 3mm - (h)15 mm black | Box, 50 pieces |
| 3501003 | Spacer 3mm - (h)15 mm transparent | Box, 50 pieces |
| 3501004 | Edging profile (T), aluminium - 2 m length | Box, 20 pieces |
| 3501005 | Bracket, additional grid holder | Bag, 10 pieces |
| 3501006 | Pad Roll, sound absorbing (w) 40 cm - 10 m | Roll |
| 3501007 | Pad Tape, self adhesive (w) 87 mm - 30 m | Roll |
| 3501008 | Fixation Tape, double side self adhesive 40 mm - 2.5 m | Roll |
| 3501009 | Screw 5 x 50 mm, for fixation grids to timber | |
| 3501010 | Screw 5.5 x 60 mm, self drill for fixation to aluminium or plastic | |
| 3501011 | Screw 5.5 x 19 mm, self drill for fixation edge to grids | |



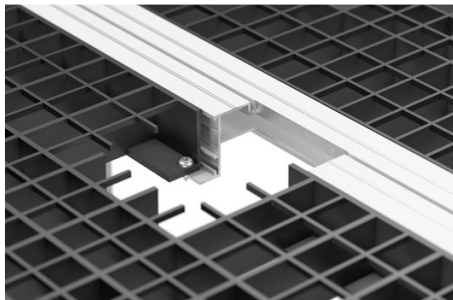
BERA Terrace Floor™ - Multiple surfaces



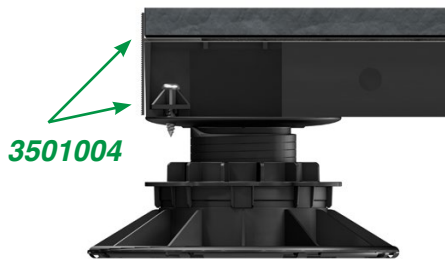
BERA Terrace Floor™ - Multiple pattern and surfaces



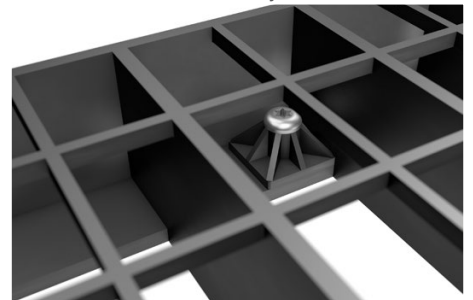
BERA Terrace Floor™ - Versatile terrace creativity



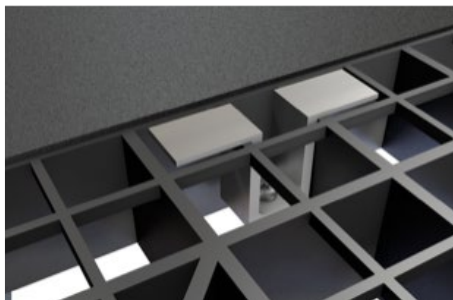
Fixation of grid (3501000), recessed into aluminium frame



Fixation of grid (3501000) direct to pedestal



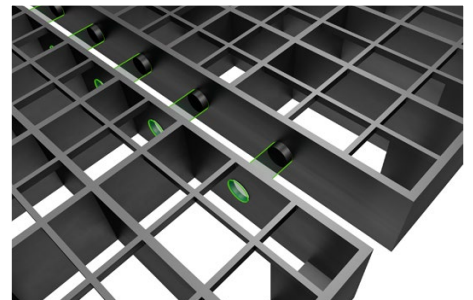
Fixation Screw-Pad (3501001)



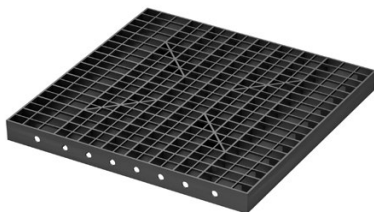
Bracket (3501005) holding grid (3501000)



Spacer 3mm (3501002 or 3501003)



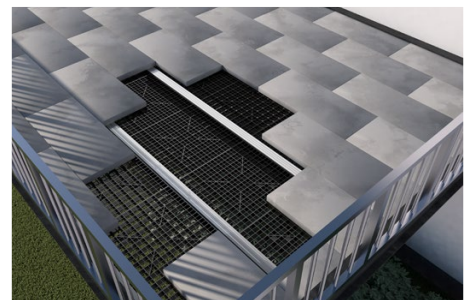
Detail of lateral locks between grids



Grid 60 x 60 cm (3501000)



BERA Terrace Floor™ - Multiple pattern tiles 30 x 120 cm



BERA Terrace Floor™ - Elevated terrace / balcony



BERA® is the trademark of BERA B.V. of The Netherlands, a company which develops stabilization systems, eco systems and prestigious outdoor living concepts.

With the company's historical roots & wealth of know-how in landscaping and architectural fields, they create innovative and environmentally sustainable solutions, supplied throughout Europe, the Middle-East, South Africa and S-E Asia regions.

Contact:

BERA B.V. (The Netherlands)
T: +31 (0) 33 257 0302
E: info@bera-bv.com

BERACR Centro América
(Centro América)
T: +(506) 87039731
E: centro.america@bera-bv.com

BERA B.V. (Germany)
T: +49 (0) 30 78 71 68 85
E: kontakt@bera-bv.com

BERA (Africa) Pty Ltd
T: +27 83 449 3954
E: franko@bera-bv.com

BERA Sarl (France)
T: +33 (0) 9 81 12 76 58
E: info@bera-sarl.fr

BERA CZECH s.r.o. (Czech Republic)
T: +420 777 484 937
E: beracz@bera-bv.com

BERA Slovakia s.r.o. (Slovakia)
T: +421 910 705 706
E: slovakia@bera-bv.com

BERA Egypt - Decoland
T: +2011 2222 8050
E: info@decoland-eg.com

BERA B.V. (Russia)
T: +7 910 440 64 70
E: russia@bera-bv.com



www.bera-bv.com