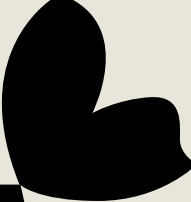





BERA  Equest**Fix**
 **ECO**

Stabilization for Horses



BERA[®]

What is BERA® EquestFix?

BERA® EquestFix is a versatile yet strong method to reinforce your equestrian zones. It is an unique 'circular' product to be implemented in the stabilization of areas such as paddocks and equestrian yards. It prevents compacting of the subbase causing stagnant water and will keep the surface even and stable to ride.

Several pavers available on the market are made of low quality recycled plastic. They tend to be inflexible and smelly due to use of plastic which was not cleaned in the recycling process. The stiffness is creating discomfort for the horses' hooves and legs. BERA® EquestFix using the unique CoPo recycled and clean raw material provides health safety, strength and flexibility in one product. Furthermore an integrated absorption system for limited thermal expansion is provided for as a part of the secure interlocking. The secure interlocking system keeps the EquestFix pavers connected.

Applications:

- 👉 Paddocks and riding arenas
- 👉 Exercise and lunging areas
- 👉 Stables and horse mounting areas
- 👉 Horse walkers zone
- 👉 Access lanes to stable and arena
- 👉 Heavy duty grass or split/gravel area

Features and benefits of BERA® EquestFix:

- 👉 Environmentally friendly solution, fully circular process including 'in-house' household waste collection, separation, cleaning and processing into a fully recyclable strong stabilization product
- 👉 Strength empty up to 170 T/m² for truck access
- 👉 Versatile honeycomb modules with anti-slip nods, 60 x 40 cm, depth 3.2 cm
- 👉 Secure interlocks keeping sheets perfectly together, providing a stable base for all trafficked and horse area's
- 👉 Anchors at the bottom of each sheet preventing shifting of the sheets
- 👉 Fully porous, yet retaining humidity for the growth of the grass
- 👉 Easily cut around obstacles such as trees, shrubs or fences
- 👉 Fully porous, yet retaining humidity for the growth of the grass
- 👉 European Union manufacturing following directives of REACH, ISO9001 and 14001



📌 For horse and equestrian areas



📌 UV stable

Environmental and Engineering Excellence

BERA® EquestFix is manufactured in the Czech Republic under stringent Quality and Environmental Control. The full circular process includes 'in-house' household waste collection, separation, cleaning and processing into a fully recyclable strong stabilization product. The well developed infrastructure to minimize our delivery carbon footprint underlines our corporate vision in providing environmentally sustainable solutions. BERA® EquestFix has 32 mm deep, open cell to ensure the highest vertical strength whilst allowing excess water to drain. Integrated anchors and secure interlocking systems provides stability and lateral strength for equestrian zones and heavy duty use with grass and split. Professional construction preparation methods and well drained foundations will ensure continued high performance of BERA® EquestFix for many years.

TECHNICAL SPECIFICATION*

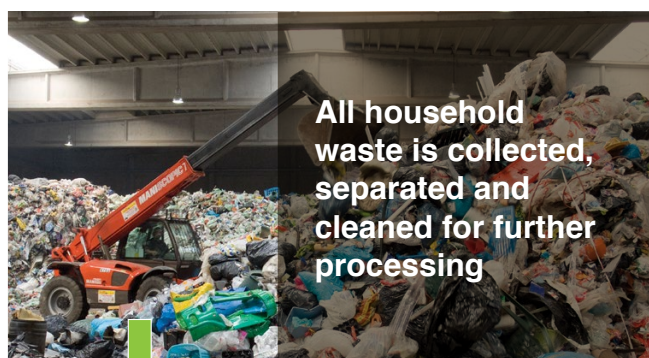
GENERAL

Material	: Recycled CoPo
Manufacturing technique	: High precision injection moulding
Manufacturing standards	: REACH, ISO9001, ISO14001
UV and frost resistance	: included
Colour	: Grey
Cell structure	: Honeycomb
Anchors	: Integrated
Interlocking	: Secured interlocking

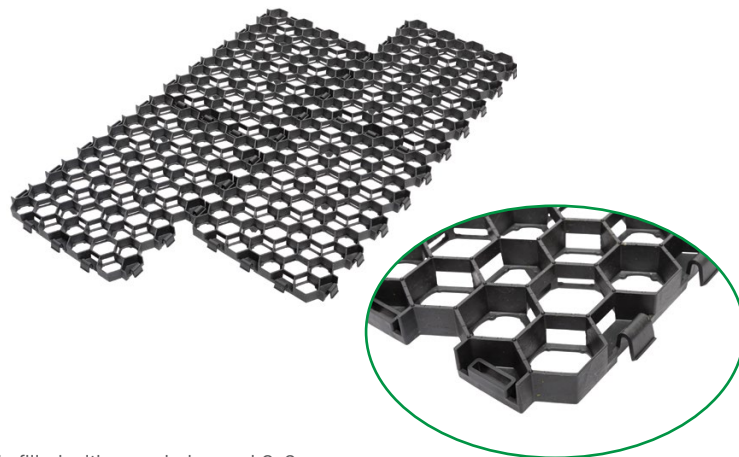
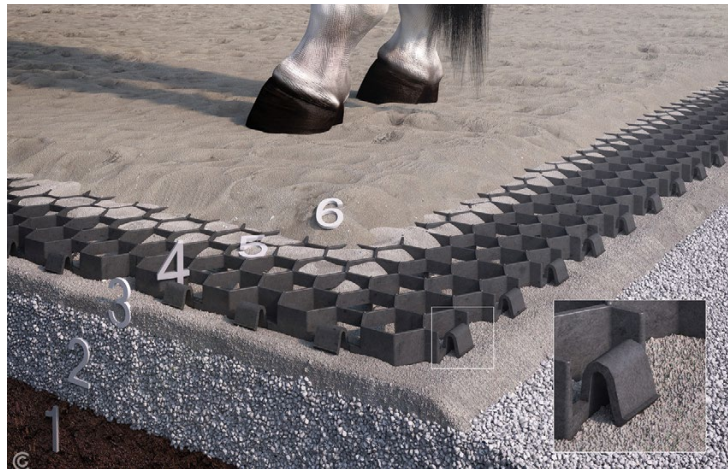
PHYSICAL DATA

Standard sheet size	: 56 x 38 x 3.2 cm
Standard size incl. anchor height	: 56 x 38 x 5.1 cm
Tolerance dimensions	: +/- 2%
Surface per sheet	: 0.22 m ²
Quantity per m ²	: 4.5
Quantity of sheets / m ² per pallet	: 140 sheets / 30.8 m ²
Weight per sheet, approx.	: 0.9 kg
Weight per m ² , approx.	: 4.1 kg
Strength, empty EN 124-1:2017	: 170 T/m ²
Thermal expansion at 50°C	: 0.1 %

**All data are subject to change without prior notice*



LAYING INSTRUCTIONS



Nomenclature:

1. Existing sub-soil with optional 200g/m² geo-textile
2. Crushed stones and gravel 0-32 mm, layer 10-25 cm
3. Fine split 2-5 mm leveling, 3-5 cm
4. EquestFix sheets in stretcher bond pattern
5. Fix optionally filled with rounded gravel 3-6 mm
6. Top layer sand 0-2 mm, thickness 8-15 cm depending on application

Detailed guidance and explanation

1. Sub-soil

Excavate the area to reach the stable sub-soil ideally sloped 0.7-1%. Lay optionally a layer of geo-textile approx. 200g/m².

2. Foundation

The foundation method will depend on the local conditions of the soil and the expected load during usage. Below are the typical guidelines:

A compacted crushed stones and gravel layer of 10 – 25 cm will form a permeable subbase. Use 0-32mm angular type

3. Base preparation for BERA® EquestFix

A leveled and compacted base of fine split and angular sand (2-5 cm) with a thickness of 3-5 cm should be placed on top of the foundation layer. Levelling recommended to be done at temperatures not below 3 °C. Edging is required to prevent sheets from shifting during usage. To allow the sheets to expand during high ambient temperatures, it is recommended that an expansion space of 2-5 cm be left between edges and obstacles, depending on the total surface size.

4. BERA® EquestFix sheets

After completing the foundation, base and edging, the sheets can be laid quickly. Stretcher bond pattern for additional stability. Pallets with 140 sheets (30.8 m²) can be positioned close to the working area and no tools are required for the laying. Anchors are integrated at the bottom of the sheets for additional stability. Use light compacting machines if and when required. For adjustment of the sheets at corners or obstacles a handsaw or circular saw can be used.

5. Filling the sheets (optional)

Use optionally rounded gravels of 3-6 mm to fill the sheets for extra strength and stability

6. Top layer

After filling the honeycomb EquestFix sheets a suitable sand layer should be added on top. Depending on the application the thickness can vary between 5-8 cm (paddock) or i.e. riding arenas 10-15 cm. Keep the sheets covered at all times.

P/s: It is possible to use the sheets for grass and also split/gravel for heavy duty parking or drives. Please contact your supplier for additional information.





BERA® is the trademark of BERA B.V. of The Netherlands, a company which develops stabilization systems, eco systems and prestigious outdoor living concepts.

With the company's historical roots & wealth of know-how in landscaping and architectural fields, they create innovative and environmentally sustainable solutions, supplied throughout Europe, the Middle-East, South Africa and S-E Asia regions.

Contact:

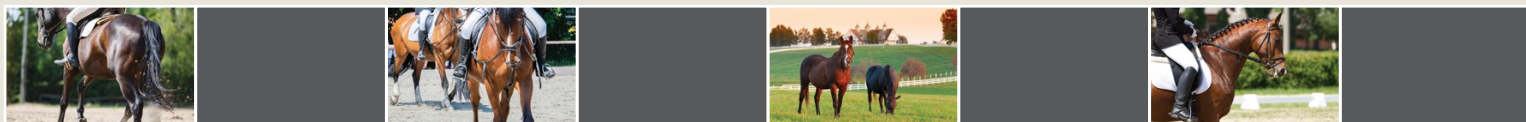
BERA B.V. (The Netherlands)
T: +31 (0) 33 257 0302
E: info@bera-bv.com

BERA Centro America (Central America)
T: +(506) 87039731
E: centro.america@bera-bv.com

BERA B.V. (Germany)
T: +49 (0) 30 78 71 68 85
E: kontakt@bera-bv.com

BERA (Africa) Pty Ltd
T: +27 83 449 3954
E: franko@bera-bv.com

BERA Sarl (France)
T: +33 (0) 9 81 12 76 58
E: info@bera-sarl.fr



www.bera-bv.com